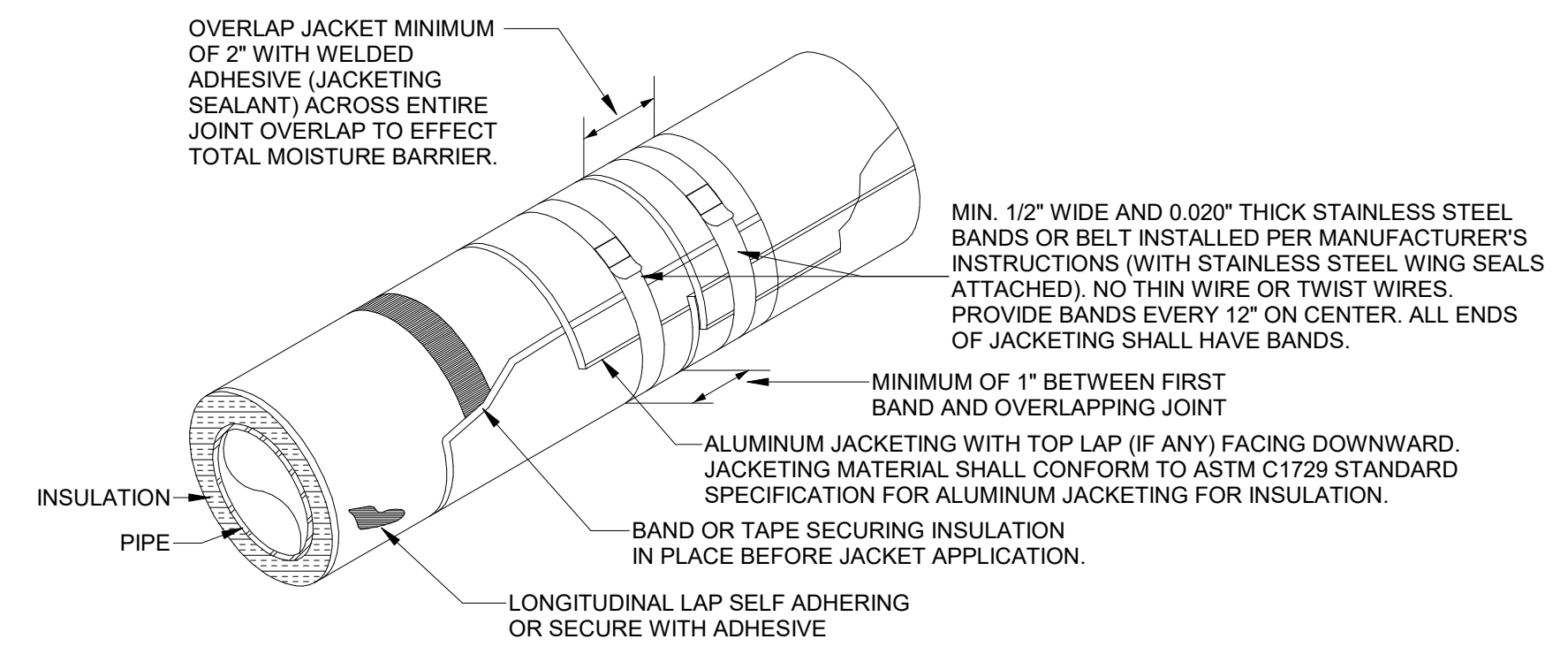


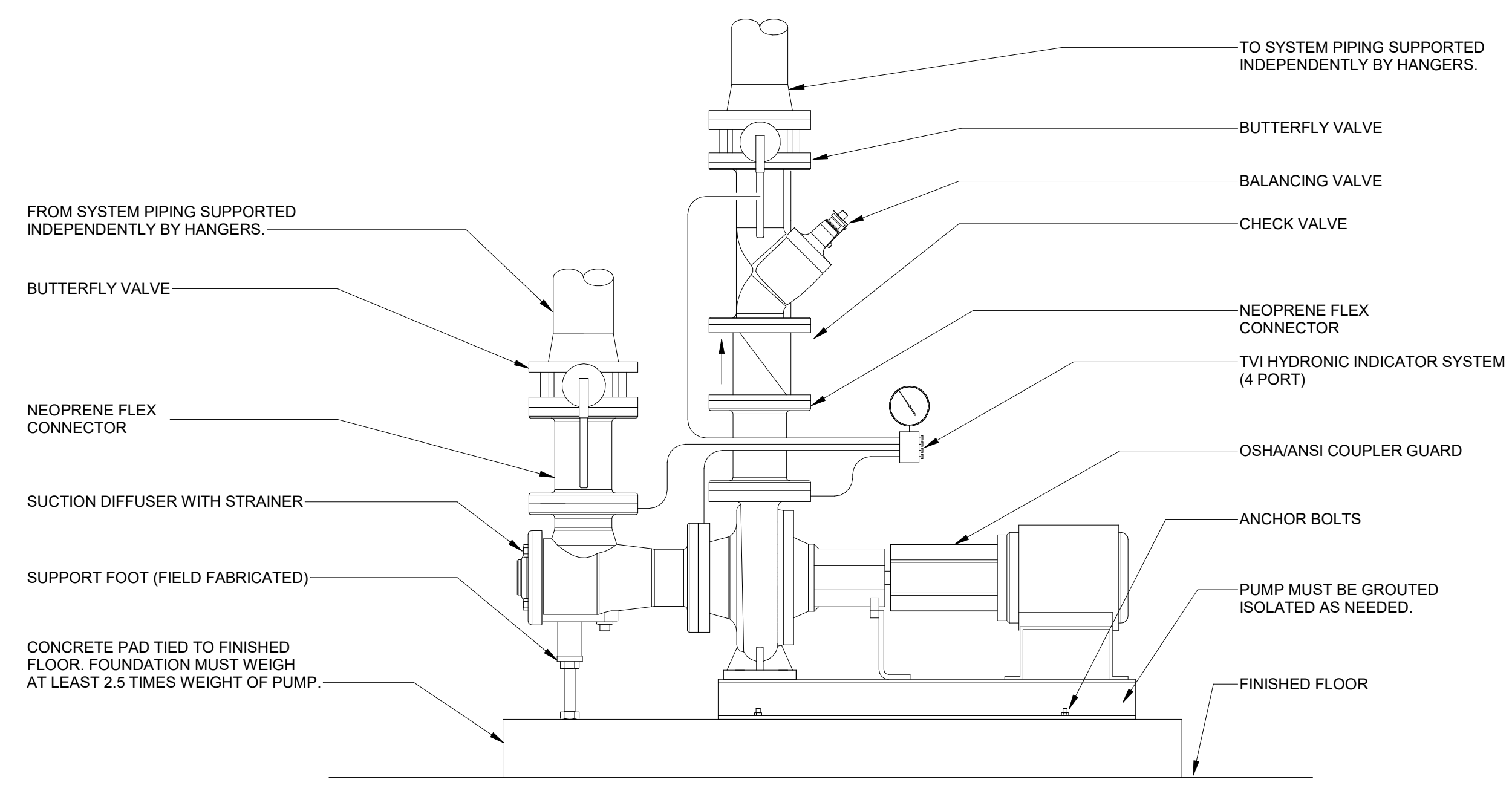
1 CONDENSING BOILER DETAIL  
M501 NOT TO SCALE



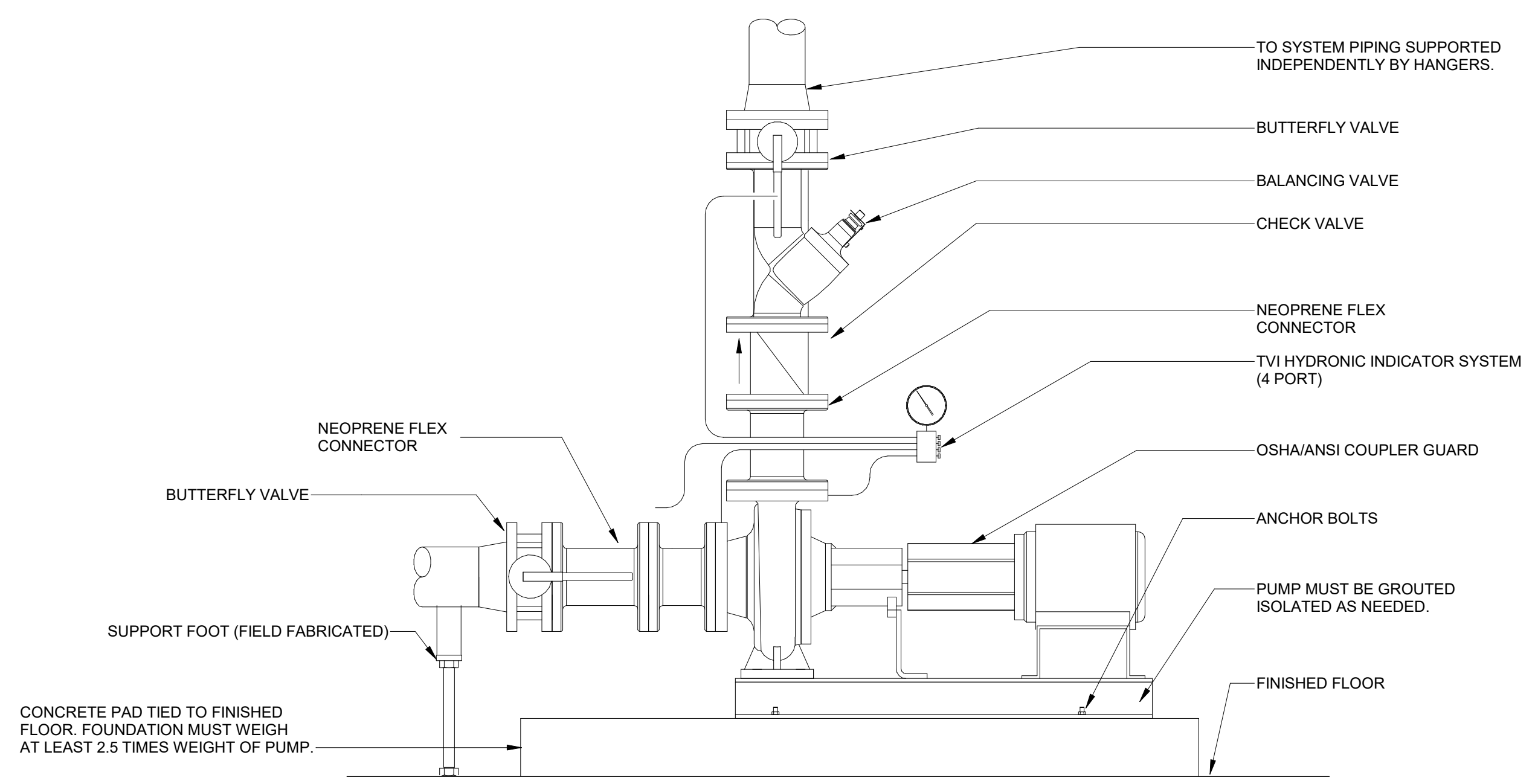
- NOTES:  
1. LONGITUDINAL ALUMINUM JACKETING SEAMS SHALL BE POSITIONED AT 3 O'CLOCK OR 9 O'CLOCK ONLY WITH TOP LAP FACING DOWNWARD FOR WEATHER PROTECTION.  
2. ALL FASTENERS AND BANDS SHALL BE NEATLY ALIGNED, AND WORK MUST BE OF HIGH-QUALITY WORKMANSHIP AND APPEARANCE. THE TENSION APPLIED TO THE BANDING SHALL BE GREAT ENOUGH TO PREVENT THE BANDING FROM SLIDING FROM ITS ORIGINAL POSITION WHEN EXPOSED TO NORMAL EXPANSION AND CONTRACTION.  
3. BUTT END JOINTS SHALL BE SECURED WITH BANDS AND SEALS CENTERED DIRECTLY OVER JOINT. THIS APPLIES TO JOINTS BETWEEN TWO STRAIGHT SECTIONS OF JACKETING, WHERE JACKETING MEETS AND ELBOW, ETC.  
4. JACKETING SEALANT SHALL BE APPLIED IN THE JACKETING JOINT BETWEEN THE OVERLAPPING PIECES OF METAL AND NOT AS A BEAD OF CAULK ON THE EXTERIOR LIP OF THE JACKETING JOINT.  
5. METAL JACKETING SHALL BE APPLIED IN A CONTINUOUS FASHION THROUGH PIPE HANGERS OR SUPPORTS.  
6. ALUMINUM JACKETING SHALL HAVE MOISTURE BARRIER / VAPOR RETARDER FACTORY APPLIED AND LAMINATED TO THE INTERIOR SURFACE TO PREVENT CORROSION OF THE JACKETING AND UNDERLYING PIPE / INSULATION. ALUMINUM JACKETING SHALL TURN CORNERS WITH JACKETING ELBOWS.  
7. ON VERTICAL STRAIGHT PIPE, EACH HIGHER JACKETING PIECE SHALL OVERLAP THE PIECE BELOW IT IN ORDER TO PREVENT WATER PENETRATION. AT VERTICAL CONNECTIONS, OVERLAPS BETWEEN ELBOWS AND STRAIGHT PIPE SHALL BE ORIENTED SO THAT OVERLAP PIECE SHALL BE ABOVE TO SHED WATER.  
8. THE MINIMUM THICKNESS OF ALUMINUM JACKETING SHALL VARY BASED ON THE DIAMETER OF THE INSULATION SYSTEM PER THE REQUIREMENTS OF ASTM C1729 SHOWN IN THE TABLE BELOW. ALUMINUM JACKETING SHALL COMPLY WITH ASTM C1729.  
9. INSTALL JACKET OVER INSULATION MATERIAL. FOR INSULATION WITH FACTORY-APPLIED JACKET, INSTALL THE FIELD-APPLIED JACKET OVER THE FACTORY-APPLIED JACKET.  
10. ALL REFRIGERANT PIPING INSULATION EXPOSED TO OUTDOORS (EXCEPT WHERE REFRIGERANT LINES ARE COVERED BY A METAL SHROUD) SHALL HAVE FIELD-APPLIED ALUMINUM JACKETING STUCCO EMBOSSED TYPE. DO NOT PROVIDE SMOOTH (PLAIN MLL) REFLECTIVE FINISH.

| OUTER INSULATION DIAMETER (IN.) | MINIMUM ALUMINUM JACKET THICKNESS, INCHES |                      |
|---------------------------------|---|----------------------|
|                                 | RIGID INSULATION                          | NON-RIGID INSULATION |
| 8" OR LESS                      | 0.016"                                    | 0.016"               |
| OVER 8" THRU 11"                | 0.016"                                    | 0.020"               |
| OVER 11" THRU 24"               | 0.016"                                    | 0.024"               |
| OVER 24" THRU 36"               | 0.020"                                    | 0.032"               |
| OVER 36"                        | 0.024"                                    | 0.040"               |

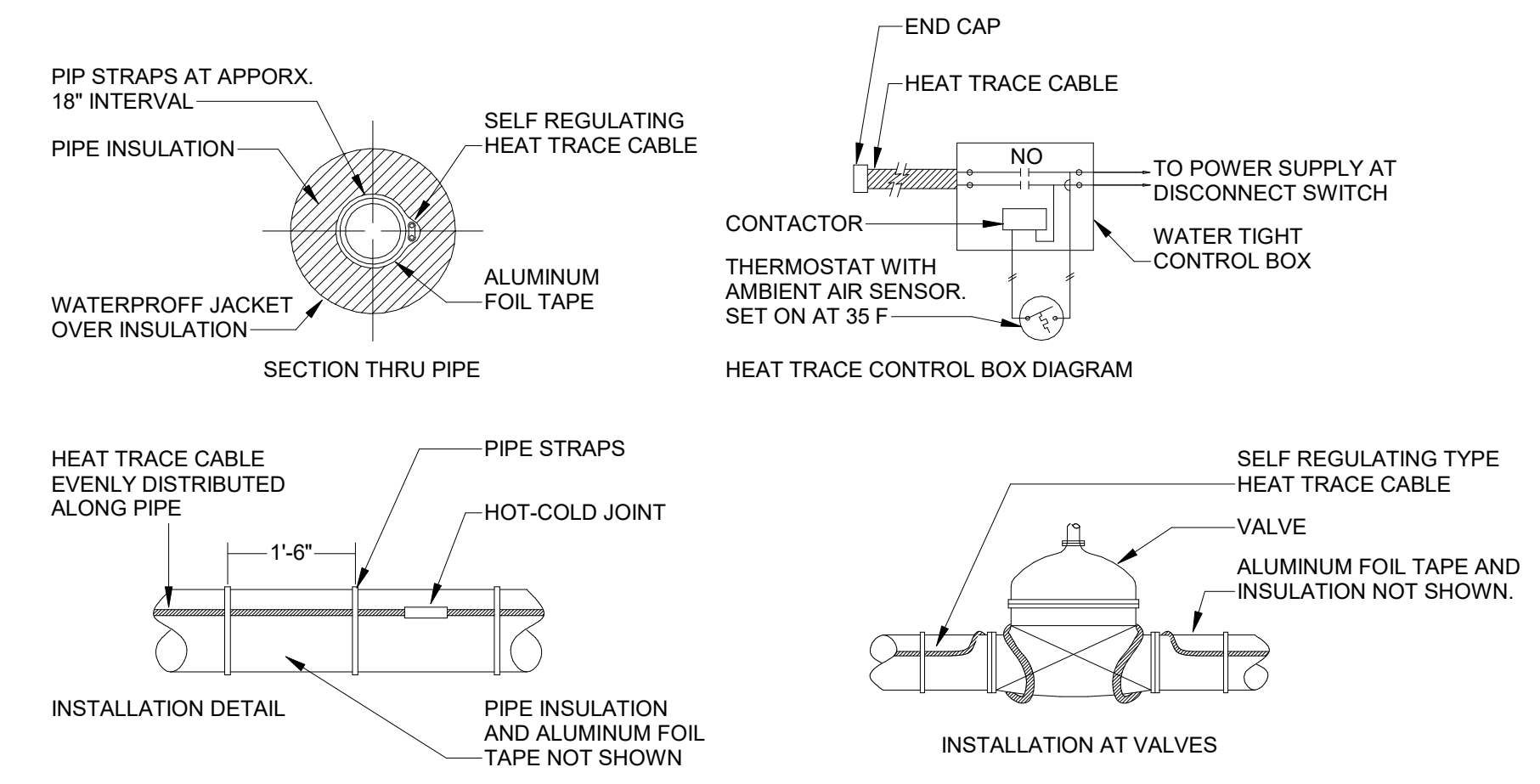
2 FIELD APPLIED ALUMINUM JACKETING OVER PIPE INSULATION  
M501 NOT TO SCALE



3 BASE MOUNTED END SUCTION PUMP DETAIL (VERTICAL)  
M501 NOT TO SCALE

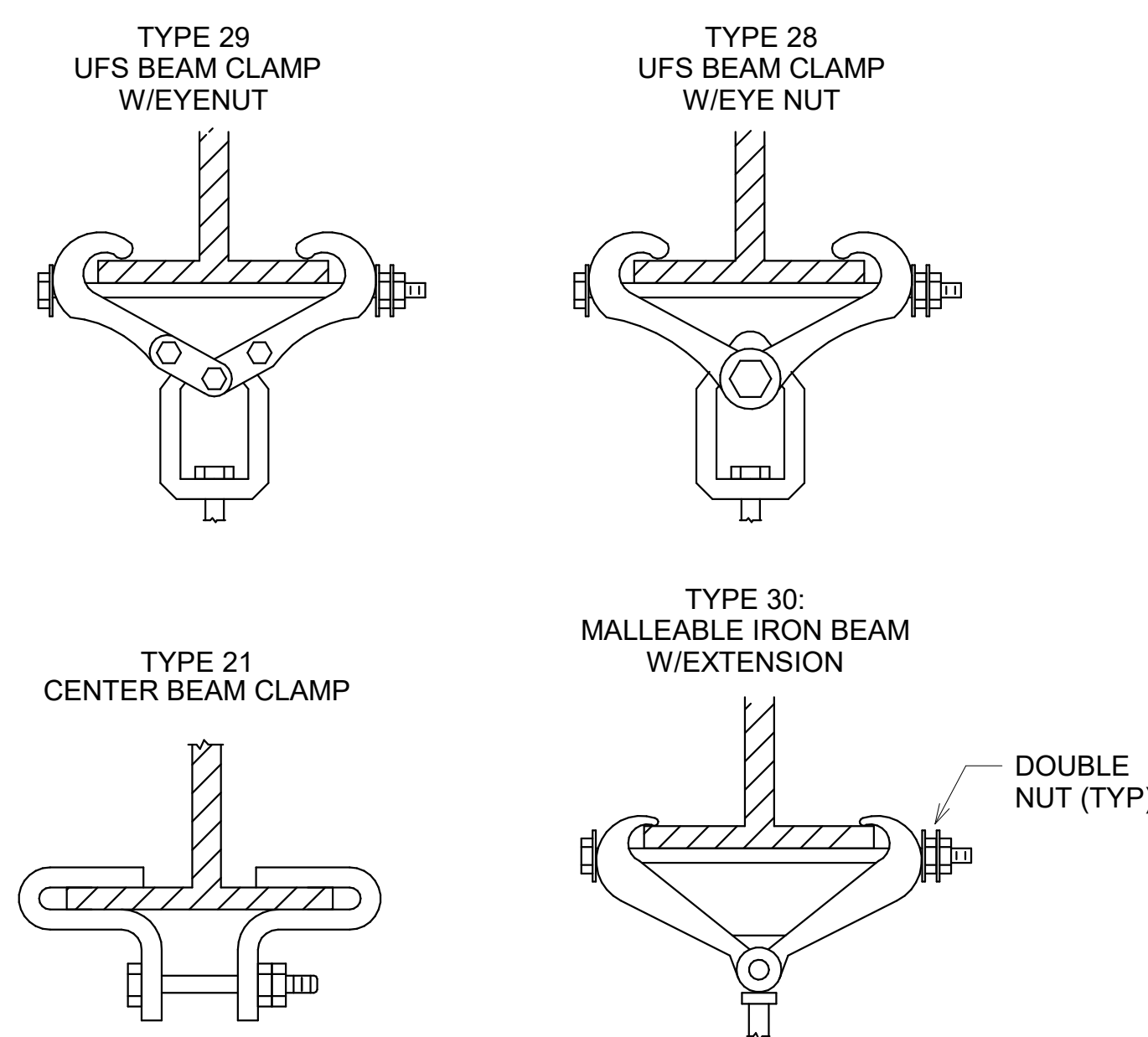


6 BASE MOUNTED END SUCTION PUMP DETAIL (HORIZONTAL)  
M501 NOT TO SCALE

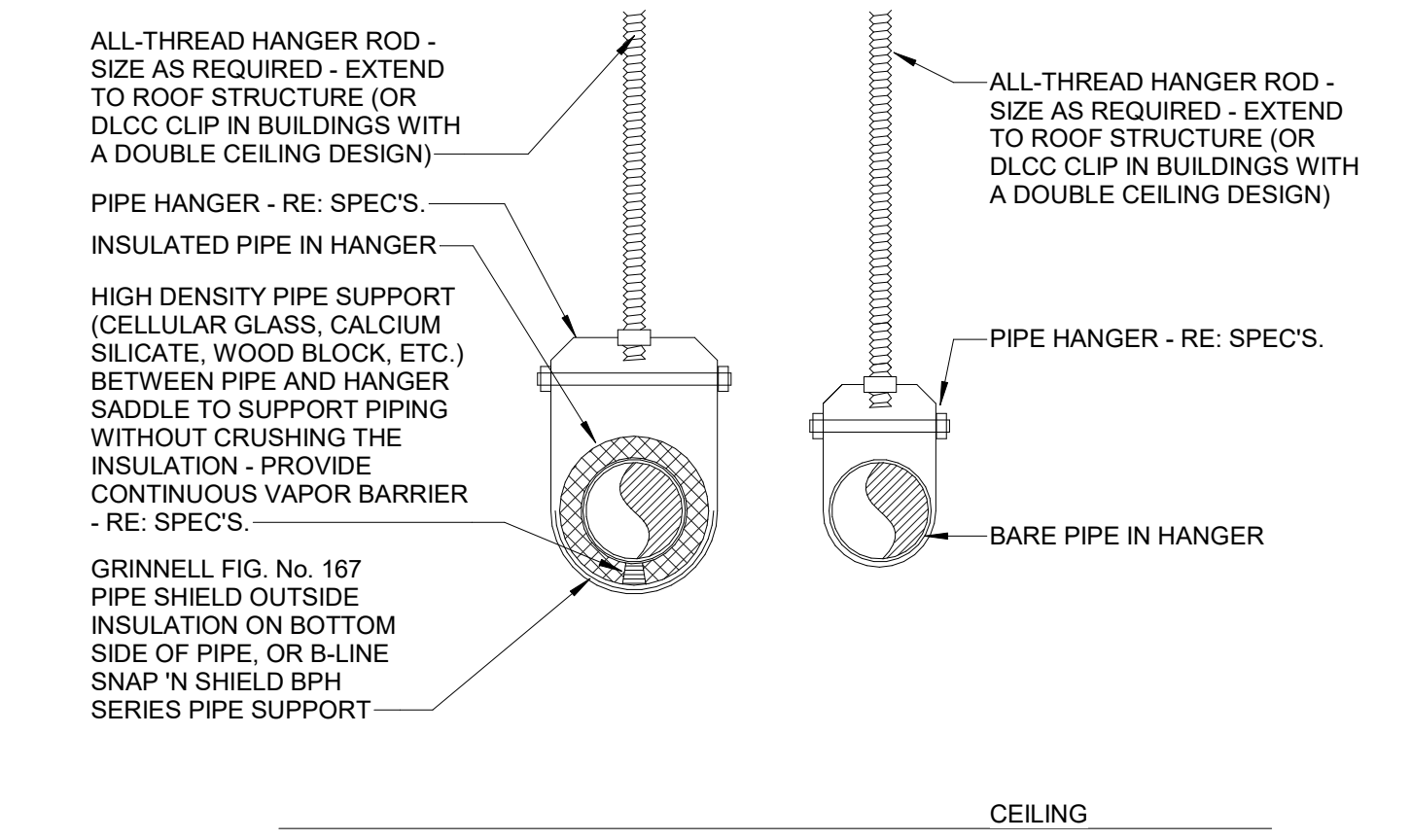


- NOTES:  
1. PROVIDE WEATHER RESISTANT LABELING ON EXTERIOR OF JACKET IDENTIFYING PIPES AS BEING "ELECTRIC TRACED" WITH VOLTAGE INDICATED.  
2. Provide extra heat at valves by wrapping each with two additional foot of cable, overlapping as required.  
3. PROVI

7 HEAT TRACING DETAILS  
M501 NOT TO SCALE



5 BEAM CLAMPS  
M501 NOT TO SCALE



8 PIPE HANGER DETAIL  
M501 NOT TO SCALE

|  |                                |
|--|--------------------------------|
| SA&E PROJECT NUMBER  | 01-415-001                     |
| BID PACKAGE  | BP-1                           |
| ISSUED FOR CONSTRUCTION  | 08-23-2023                     |
| <b>Southern A&amp;E</b>  |                                |
| 7951 Troon Circle<br>Austell, Ga 30168<br>(770) 819-7777   | R# Doc# Date<br>1 AD2 09/08/23 |
| architects & engineers   |                                |
| © COPYRIGHT 2023 BY SOUTHERN A&E, LLC. ALL RIGHTS RESERVED. THIS DOCUMENT IS THE PROPERTY OF SOUTHERN A&E, LLC AND SHALL NOT BE COPIED OR REPRODUCED IN WHOLE OR IN PART WITHOUT EXPRESSED WRITTEN CONSENT FROM SOUTHERN A&E, LLC. |                                |

REPLACEMENT OF COOLING TOWER & BOILER:  
**THREADMILL COMPLEX**  
5000 AUSTELL POWDER SPRINGS ROAD  
**THE CITY OF AUSTELL**  
5000 AUSTELL POWDER SPRINGS ROAD

MECHANICAL EQUIPMENT DETAILS

|  |  |                |
|--|--|----------------|
|  | STATE BOARD OF REGISTRATION FOR PROFESSIONAL ENGINEERS AND LAND SURVEYORS              | DRAWING NUMBER |
|  | SOUTHERN A & E, LLC<br>ENGINEER FIRM<br>LICENSE NO. PE039650<br>EXP. DATE - 06/30/2024 | <b>M501</b>    |